

PART OF SW 1/4 SEC. 17, T.5N., R.1W., S.L.B. & M.

177

S 89°36'42"E 1121.00'  
AND S 0°22'W 1141.91'  
FROM W 1/4 COR SEC 17.

# SOUTHRIDGE "76"

LOTS 1-5, 26-37

IN WASHINGTON TERRACE CITY

SCALE 1"=50'

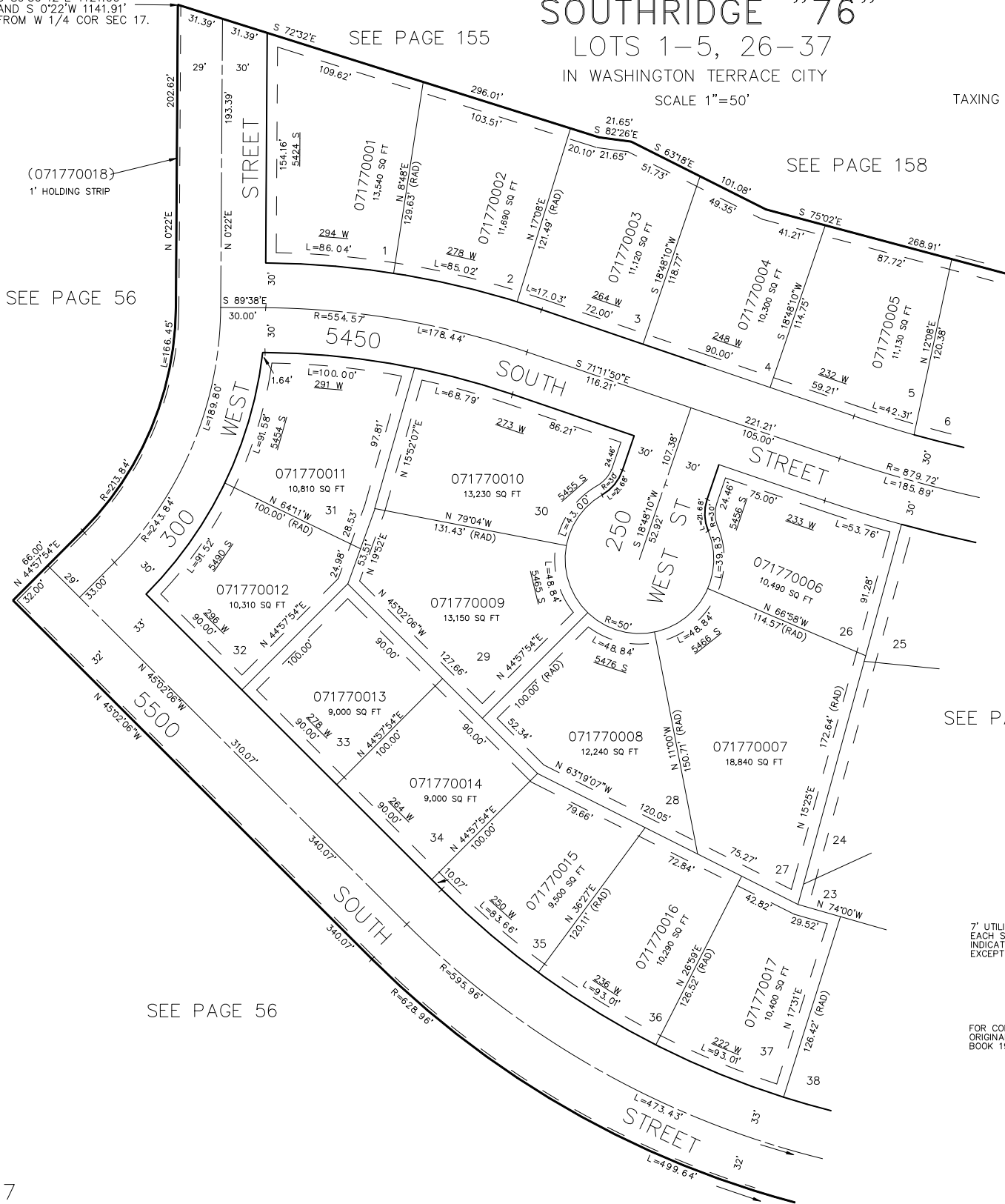
TAXING UNIT: 24

SEE PAGE 155

SEE PAGE 158

(071770018)  
1' HOLDING STRIP

SEE PAGE 56



SEE PAGE 178

SEE PAGE 56